

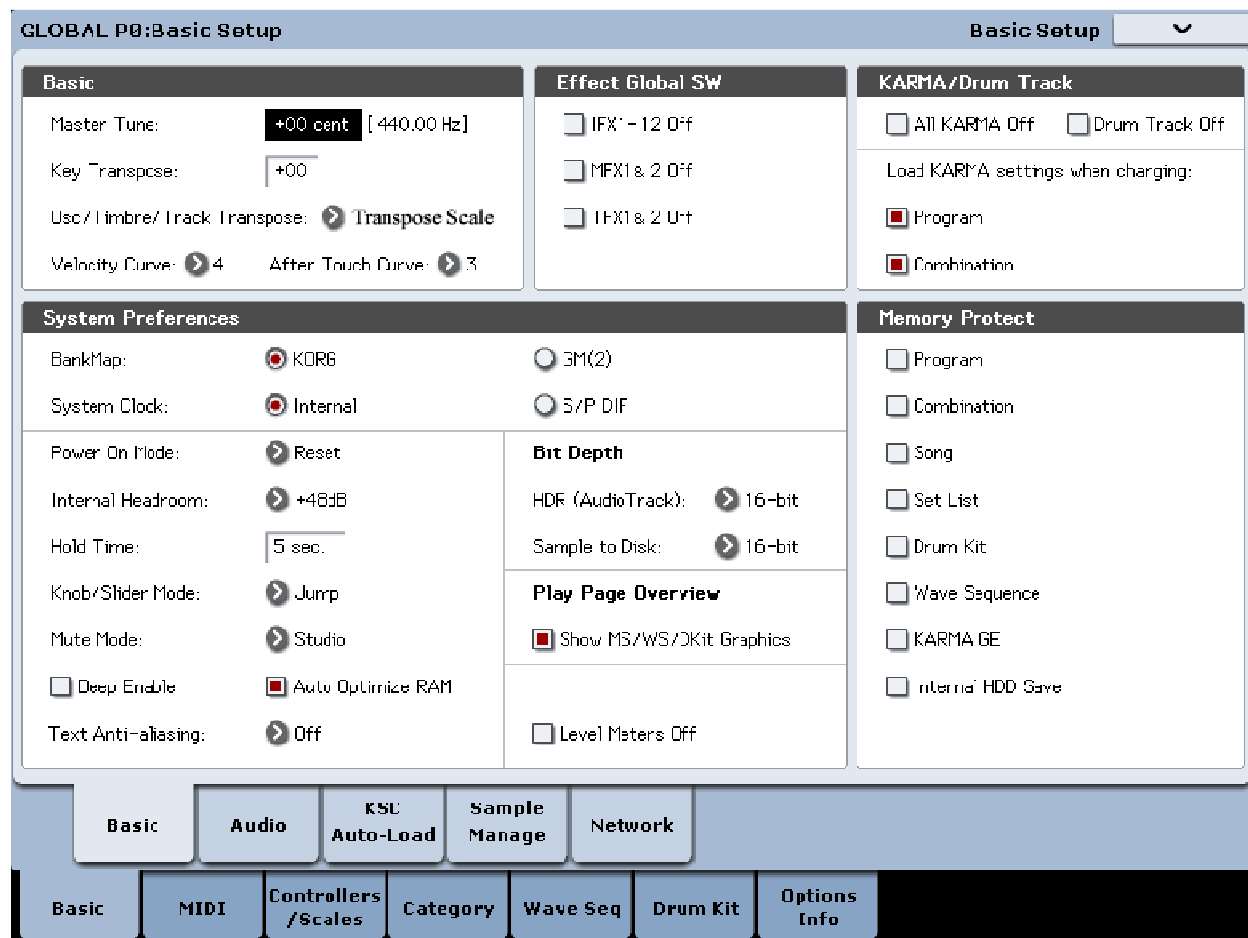
# EXs 187 Vintage Analog Dynamics Voice Name List



Kelfar Technologies  
Karim El-Far  
7486 Boris Court  
Rohnert Park, CA 94928  
USA  
Phone: (707) 664-9892  
Email: info@kelfar.net

Before using the EXs-187 Vintage Analog Dynamics, you have to make sure that Korg Kronos has the following suggested default **Global** setup:

1. Press the button **Global**
2. Press the tab **Basic** on the touch-screen to access the **Global P0: Basic Setup**



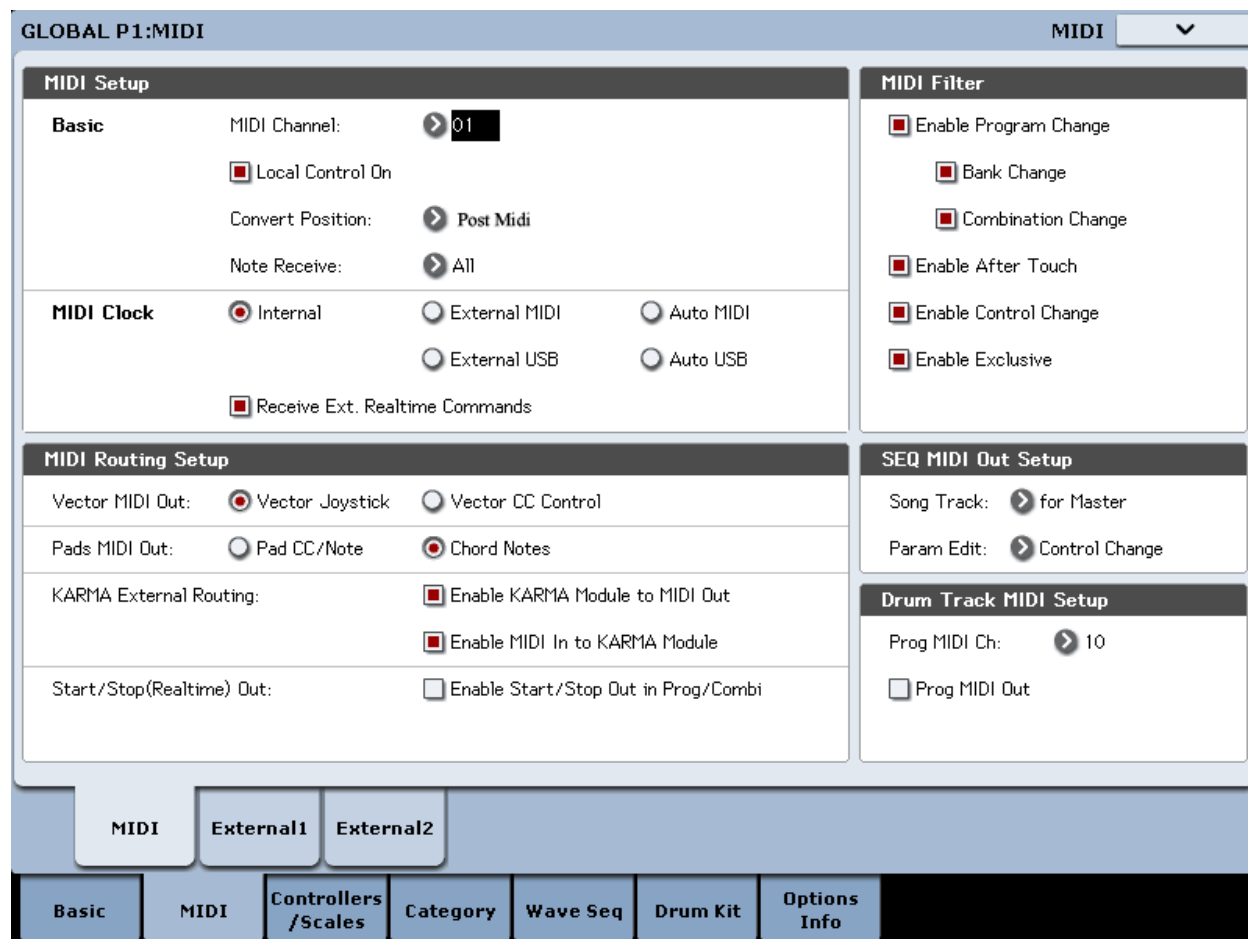
By default the **Osc/Timbre/Track Transpose** is set to "**Works Within Scale**". In order for the EXs-187 Vintage Analog Dynamics sound library to work properly, it is necessary to set the **Osc/Timbre/Track** to "**Transposes Scale**".

Be sure to **Write Global Setting** when modifying the data as follows:

1. Select **Write Global Setting** from the drop-menu, a dialog box will appear.
2. Press **OK** to write the data, or press cancel without writing the data.

You can also use the **SEQUENCER REC/WRITE** switch to write data in the same way as the **Write Global Setting** command.

1. Press the button **Global**
2. Press the tab **Midi** on the touch-screen to access the **GLOBAL P1:MIDI**



By default the **Convert Position** is set to "Pre Midi". In order for the EXs-187 Vintage Analog Dynamics sound library to work properly, it is necessary to set the **Convert Position** to "Post Midi".

Be sure to **Write Global Setting** when modifying the data as follows:

1. Select **Write Global Setting** from the drop-menu, a dialog box will appear.
2. Press **OK** to write the data, or press cancel without writing the data.

You can also use the **SEQUENCER REC/WRITE** switch to write data in the same way as the **Write Global Setting** command.

For your convenience, we have enabled the **RT KNOBS/KARMA (LED IS ON)** to take control of the sound in realtime. However, check page #5 for more assignable knobs, switches, and programs with Karma GE control.

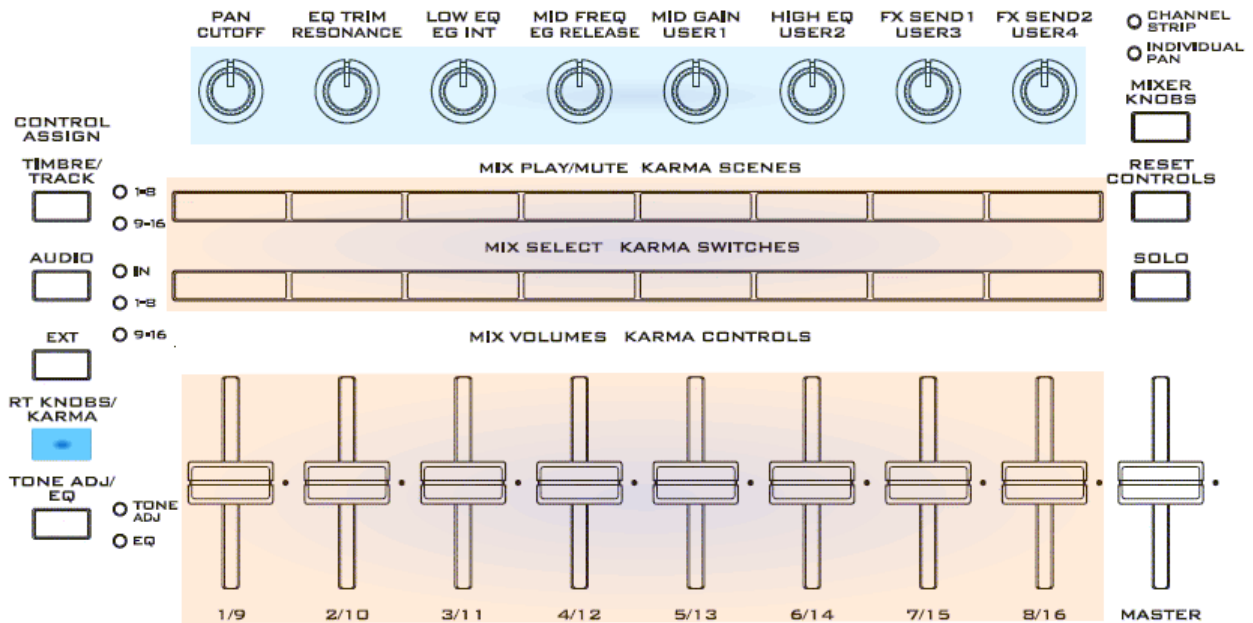
**From Korg Kronos Operation Guide:**

"The **Realtime Knobs** are a traditional feature of Korg workstations, combining modulation, quick edits, and hands-on control.

"In **RT KNOBS/KARMA** mode, **Knobs 1-4** have dedicated functions, as printed on the front panel: **Filter Cutoff, Filter Resonance, Filter EG Intensity, and Release Time**. All of these correspond to standard MIDI CCs."

**Common Realtime Controls: Knobs, Switches, Joystick, Vector Joystick, and Ribbon:**

<b>Knob 1 (CUTOFF)</b>	<b>SW1:</b>	<b>VALUE SLIDER:</b>
<b>Knob 2 (RESONANCE)</b>	<b>SW2:.</b>	<b>AFTER TOUCH</b>
<b>Knob 3 (EG INT)</b>	<b>JS +Y:</b>	<b>VELOCITY</b>
<b>Knob 4 (EG RELEASE)</b>	<b>JS -Y:</b>	
<b>Knob 5 (USER1):</b>	<b>JS -X:</b>	
<b>Knob 6 (USER2):</b>	<b>JS +X:</b>	
<b>Knob 7 (USER3):</b>	<b>MFX1</b>	<b>Ribbon:</b>
<b>Knob 8 (USER4):</b>	<b>MFX2</b>	<b>VJS +X: +Y:</b>



Voice Name List

Programs - U-CC

No.	Name	No.	Name
000	Violin Octave 1	032	Expressive Anl.Violin 2
001	Violin Octave 2	033	Expressive Bouzouki
002	Violin Octave Tube 3	034	Metal Flute 1
003	Flute Octave 1	035	Random Metal Flute 2
004	Flute Octave 2	036	Bamboo Eg.Flute 1
005	Clarinet Octave 1	037	Random Bambo Eg.Flute 2
006	Clarinet Octave 2	038	Hybrid Brass 2021
007	Clarinet Dbl Reed	039	Brass + Strings
008	Double Reed Octave	040	70's Slow Strings
009	Oboe Reed Octave	041	Detuned Small Pads 1
010	Accordion Octave	042	Detuned Large Pads 2
011	Trombone Octave	043	E.Piano + Strings
012	Clav / Guitar	044	Expressive E.Piano
013	Clav Flute / Guitar	045	Analog Bells
014	Sazi Octave	046	Vintage Organ 1
015	Pluck Octave	047	Vintage Organ 2
016	E. Kaman Octave 1	048	Vintage Organ 3
017	E. Kaman Octave 2	049	Vintage Analog Guitar
018	Violin + Flute Octave	050	Guitar +Bass WahWah Funk
019	Violin + Clarinet Octave	051	Guitar + Bass Funk
020	Violin + Clr2Reed Octave	052	Small Group Strings 1
021	Violin + Dbl Reed Octave	053	Large Group Strings 2
022	Flute + Clarinet Octave	054	Large Group Strings Oct
023	Flute + Clr2Reed Octave	055	Pizzicato+Group Strings
024	Clarinet+Clr2Reed Octave	056	Orchestra Pizzicato
025	Clarinet +DblReed Octave	057	Saw Octave 1
026	Clarinet + Oboe	058	Saw Octave 2
027	Expressive Clarinet 1	059	Square Octave
028	Expressive Clarinet 2	060	S1 Rt Knobs VJS Ring Mod
029	Expressive Sax+Dbl Reed	061	S2 RT Knobs VJS Ring Mod
030	Expressive Trombone	062	S3 RT Knobs VJS Ring Mod
031	Expressive Anl.Violin 1	063	S4 RT Knobs VJS Ring Mod

**AMS (Alternate Modulation Source, Realtime Controls)**

**Programs - UCC**

No.	Name	AMS (Alternate Modulation Source, Realtime Controls)
000	Violin Octave 1	SW1=Oct. Dn, SW2=Oct.Up, JS +Y:Vibrato, JS -Y: Resonance
001	Violin Octave 2	SW1=Oct. Dn, SW2=Oct.Up, JS +Y:Vibrato, JS -Y: Resonance
002	Violin Octave Tube 3	SW1=Oct. Dn, SW2=Oct.Up, JS +Y:Vibrato, JS -Y: Resonance
003	Flute Octave 1	SW1=Oct. Dn, SW2=Oct.Up, JS +Y:Vibrato, JS -Y: Resonance
004	Flute Octave 2	SW1=Oct. Dn, SW2=Oct.Up, JS +Y:Vibrato, JS -Y: Resonance
005	Clarinet Octave 1	SW1=Oct. Dn, SW2=Oct.Up, JS +Y:Vibrato, JS -Y: Resonance
006	Clarinet Octave 2	SW1=Oct. Dn, SW2=Oct.Up, JS +Y:Vibrato, JS -Y: Resonance
007	Clarinet Dbl Reed	SW1=Oct. Dn, SW2=Oct.Up, JS +Y:Vibrato, JS -Y: Resonance
008	Double Reed Octave	SW1=Oct. Dn, SW2=Oct.Up, JS +Y:Vibrato, JS -Y: Resonance
009	Oboe Reed Octave	SW1=Oct. Dn, SW2=Oct.Up, JS +Y:Vibrato, JS -Y: Resonance
010	Accordion Octave	SW1=Oct. Dn, SW2=Oct.Up, JS +Y:Vibrato, JS -Y: Resonance
011	Trombone Octave	SW1=Oct. Dn, SW2=Oct.Up, JS +Y:Vibrato, JS -Y: Resonance
012	Clav / Guitar	SW1=Oct. Dn, SW2=Oct.Up, JS +Y:Vibrato, JS -Y: Resonance
013	Clav Flute / Guitar	SW1=Oct. Dn, SW2=Oct.Up, JS +Y:Vibrato, JS -Y: Resonance
014	Sazi Octave	SW1=Oct. Dn, SW2=Oct.Up, JS +Y:Vibrato, JS -Y:Mute
015	Pluck Octave	SW1=Oct. Dn, SW2=Oct.Up, JS +Y:Vibrato, JS -Y:Mute
016	E. Kaman Octave 1	SW1=Oct. Dn, SW2=Oct.Up, JS +Y:Vibrato
017	E. Kaman Octave 2	SW1=Oct. Dn, SW2=Oct.Up, JS +Y:Vibrato
018	Violin + Flute Octave	SW1=Oct. Dn, SW2=Oct.Up, JS +Y:Vibrato, JS -Y: Resonance
019	Violin + Clarinet Octave	SW1=Oct. Dn, SW2=Oct.Up, JS +Y:Vibrato, JS -Y: Resonance
020	Violin + Clr2Reed Octave	SW1=Oct. Dn, SW2=Oct.Up, JS +Y:Vibrato, JS -Y: Resonance
021	Violin + Dbl Reed Octave	SW1=Oct. Dn, SW2=Oct.Up, JS +Y:Vibrato, JS -Y: Resonance
022	Flute + Clarinet Octave	SW1=Oct. Dn, SW2=Oct.Up, JS +Y:Vibrato, JS -Y: Resonance
023	Flute + Clr2Reed Octave	SW1=Oct. Dn, SW2=Oct.Up, JS +Y:Vibrato, JS -Y: Resonance
024	Clarinet+Clr2Reed Octave	SW1=Oct. Dn, SW2=Oct.Up, JS +Y:Vibrato, JS -Y: Resonance
025	Clarinet +DblReed Octave	SW1=Oct. Dn, SW2=Oct.Up, JS +Y:Vibrato, JS -Y: Resonance
026	Clarinet + Oboe	SW1=Oct. Dn, SW2=Oct.Up, JS +Y:Vibrato, JS -Y: Resonance
027	Expressive Clarinet 1	SW 1=Oct.Dn, SW2 JS +Y Ribbon Lock, VALUE SLIDER PITCH=12
028	Expressive Clarinet 2	SW 1=Oct.Dn, SW2 JS +Y Ribbon Lock, VALUE SLIDER PITCH=12
029	Expressive Sax+Dbl Reed	SW 1=Oct.Dn, SW2 JS +Y Ribbon Lock, VALUE SLIDER PITCH=12
030	Expressive Trombone	SW 1=Oct.Dn, SW2 JS +Y Ribbon Lock, VALUE SLIDER PITCH=12
031	Expressive Anl.Violin 1	SW 1=Pizzicato, SW2 =Oct Dn., JS +Y:Vibrato
032	Expressive Anl.Violin 2	SW 1=Pizzicato, SW2 =Oct Dn., JS +Y:Vibrato
033	Expressive Bouzouki	SW 1=Oct.Dn, SW2 Oct. Up, Karma Tremolo Velocity 102, JS -Y = Tempo
034	Metal Flute 1	SW1=Oct. Dn, SW2=Oct.Up, JS +Y:Vibrato
035	Random Metal Flute 2	SW1=Oct. Dn, SW2=Oct.Up, JS +Y:Vibrato, Random Harmonics +7
036	Bamboo Eg.Flute 1	SW1=Oct. Dn, SW2=Oct.Up, JS +Y:Vibrato
037	Random Bambo Eg.Flute 2	SW1=Oct. Dn, SW2=Oct.Up, JS +Y:Vibrato, Random Harmonics +7
038	Hybrid Brass 2021	SW 1=Oct.Dn, SW2 Oct.Up, Knob 5 = Detune, JS +Y = Vibrato, JS -Y = Filter Mod, VALUE SLIDER = PITCH 12
039	Brass + Strings	SW 1=Oct.Dn, SW2 Oct.Up, Knob 5 = Detune, JS +Y = Vibrato, JS -Y = Filter Mod, VALUE SLIDER = PITCH 12
040	70's Slow Strings	SW 1=Oct.Down, SW2 Oct. Up, Knob 5 = Frequency Speed, Knob 6 = Wet/Dry amount (Frequency Speed)
041	Detuned Small Pads 1	SW 1=Oct.Down, SW2 Oct. Up, Knob 5 = Frequency Speed, Knob 6 = Wet/Dry amount (Frequency Speed)
042	Detuned Large Pads 2	SW 1=Oct.Down, SW2 Oct. Up, Knob 5 = Frequency Speed, Knob 6 = Wet/Dry amount (Frequency Speed)

Kelfar Technologies EXs-187 Vintage Analog Dynamics

043	E.Piano + Strings	SW 1=Oct.Down, SW2 Oct. Up
044	Expressive E.Piano	SW 1=Oct.Down, SW2 Oct. Up
045	Analog Bells	SW 1=Oct.Down, SW2 Oct. Up
046	Vintage Organ 1	SW 1=Rotary Speaker Value = 100, JS +Y Rotary Speaker Speed
047	Vintage Organ 2	SW 1=Rotary Speaker Value = 100, JS +Y Rotary Speaker Speed
048	Vintage Organ 3	SW 1=Rotary Speaker Value = 100, JS +Y Rotary Speaker Speed
049	Vintage Analog Guitar	SW 1= Mod/Vibrato, SW2 Mod/ Velocity Slide, Knob 5 Vibrato Rate, JS +Y WahWah, JS -Y Mute
050	Guitar +Bass WahWah Funk	SW 1= Mod/Vibrato, SW2 Mod/ Velocity Slide, Knob 5 Vibrato Rate, JS +Y WahWah, JS -Y Mute
051	Guitar + Bass Funk	SW 1=Oct.Down, SW2 Oct. Up
052	Small Group Strings 1	SW 1=Portamento (On/Off), Default On
053	Large Group Strings 2	SW 1=Portamento (On/Off), Default On
054	Large Group Strings Oct	SW 1=Portamento (On/Off), Default On
055	Pizzicato+Group Strings	SW 1=Portamento (On/Off), Default On
056	Orchestra Pizzicato	SW 1=Oct.Down
057	Saw Octave 1	SW 1=Oct.Down, SW2 Oct. Up
058	Saw Octave 2	SW 1=Oct.Down, SW2 Oct. Up
059	Square Octave	SW 1=Oct.Down, SW2 Oct. Up
060	S1 Rt Knobs VJS Ring Mod	SW 1=Oct.Down, SW2 Oct. Up, Knob 5 = Frequency Speed, Knob 6 = Wet/Dry amount (Frequency Speed) , VJS +X Ring Mod, VJS +Y Freq.
061	S2 RT Knobs VJS Ring Mod	SW 1=Oct.Down, SW2 Oct. Up, Knob 5 = Frequency Speed, Knob 6 = Wet/Dry amount (Frequency Speed) , VJS +X Ring Mod, VJS +Y Freq.
062	S3 RT Knobs VJS Ring Mod	SW 1=Oct.Down, SW2 Oct. Up, Knob 5 = Frequency Speed, Knob 6 = Wet/Dry amount (Frequency Speed) , VJS +X Ring Mod, VJS +Y Freq.
063	S4 RT Knobs VJS Ring Mod	SW 1=Oct.Down, SW2 Oct. Up, Knob 5 = Frequency Speed, Knob 6 = Wet/Dry amount (Frequency Speed) , VJS +X Ring Mod, VJS +Y Freq.



**MultiSamples**

No.	NAME
000	Violin Octave
001	Flute Octave
002	Clarinet Octave
003	Clarinet Dbl Reed
004	Dbl Reed Octave
005	Clav
006	Clav Flute
007	S2_Violin Octave
008	S2_Violin Tube Octave
009	S2_Flute Octave
010	S2_Clarinet Octave
011	S2_Trombone Octave
012	S2_Oboe Octave
013	S2_Accordion Octave
014	Bamboo Nay
015	*Kelfar_Strings2020 -L* <i>Stereo</i>
016	*Kelfar_Strings2020 -R
017	*Kelfar_Strings2021 -L* <i>Stereo</i>
018	*Kelfar_Strings2021 -R

**Karma GEs**

**Bank U-G**

No.	NAME
000	Oud Tremolo
001	Kanun Tremolo