

EXs-185 Accordion Master
Voice Name List

EXs-185
Accordion Master
FOR EGYPTIAN AND ORIENTAL STYLES

**Master,
Accordion,
Musette,
Organ,
Bandoneon,
Piccolo,
Harmonium**

KELFAR
TECHNOLOGIES

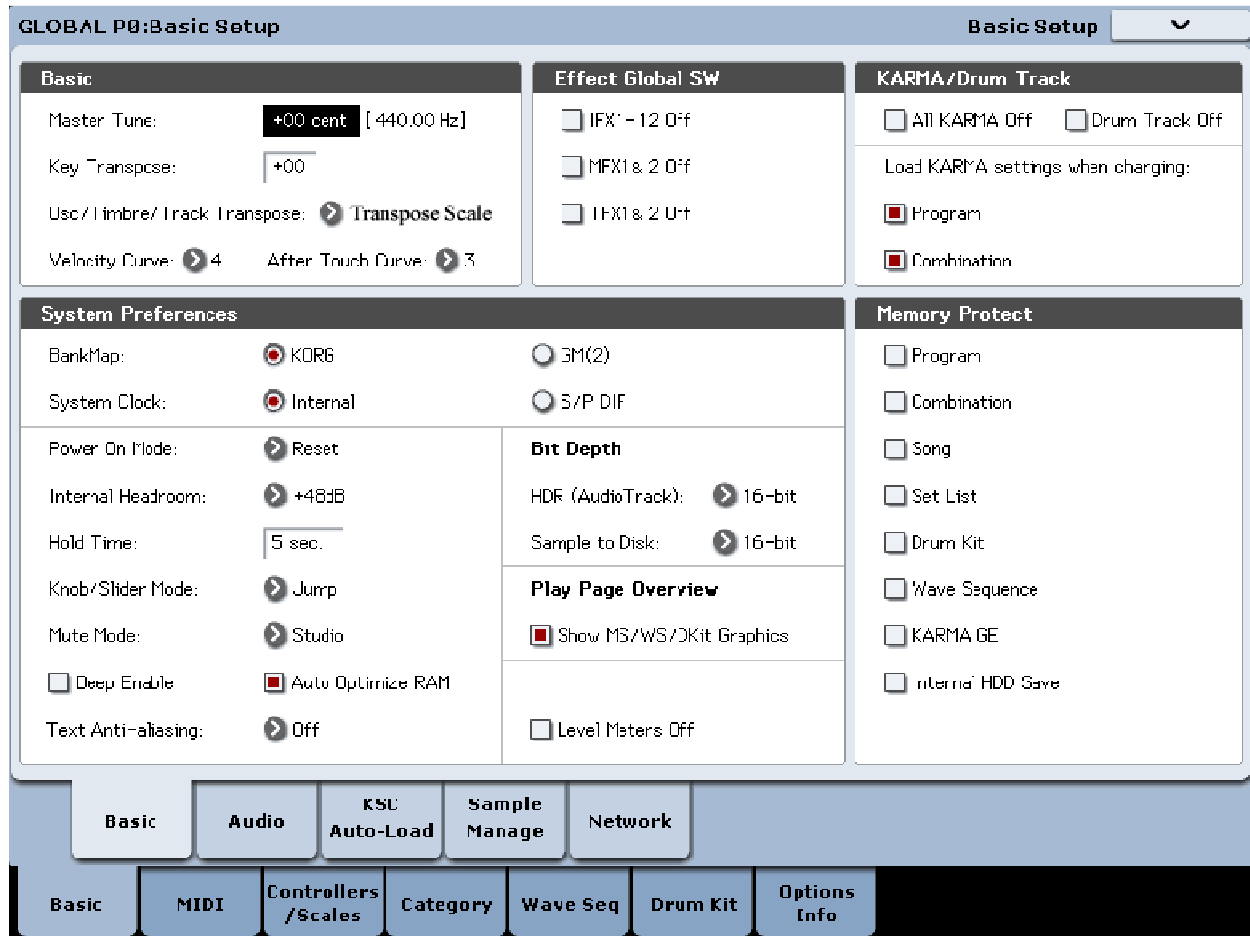
KORG
KRONOS
SOUND LIBRARIES

Kelfar Technologies
Karim El-Far
7486 Boris Court
Rohnert Park, CA 94928
USA
Phone: (707) 664-9892
Email: info@kelfar.net

Kelfar Technologies EXs-185 Accordion Master

Before using the EXs-185 Accordion Master, you have to make sure that Korg Kronos has the following suggested default **Global** setup:

1. Press the button **Global**
2. Press the tab **Basic** on the touch-screen to access the **Global P0: Basic Setup**



By default the **Osc/Timbre/Track Transpose** is set to "**Works Within Scale**". In order for the EXs-185 Accordion Master sound library to work properly, it is necessary to set the **Osc/Timbre/Track** to "**Transposes Scale**".

Be sure to **Write Global Setting** when modifying the data as follows:

1. Select **Write Global Setting** from the drop-menu, a dialog box will appear.
2. Press **OK** to write the data, or press cancel without writing the data.

You can also use the **SEQUENCER REC/WRITE** switch to write data in the same way as the **Write Global Setting** command.

1. Press the button **Global**
2. Press the tab **Midi** on the touch-screen to access the **GLOBAL P1:MIDI**

GLOBAL P1:MIDI MIDI ▼

MIDI Setup

Basic

MIDI Channel: > 01

☒ Local Control On

Convert Position: > Post Midi

Note Receive: > All

MIDI Clock

☒ Internal ☐ External MIDI ☐ Auto MIDI

☐ External USB ☐ Auto USB

☒ Receive Ext. Realtime Commands

MIDI Filter

☒ Enable Program Change

☒ Bank Change

☒ Combination Change

☒ Enable After Touch

☒ Enable Control Change

☒ Enable Exclusive

MIDI Routing Setup

Vector MIDI Out: ☒ Vector Joystick ☐ Vector CC Control

Pads MIDI Out: ☐ Pad CC/Note ☒ Chord Notes

KARMA External Routing:

☒ Enable KARMA Module to MIDI Out

☒ Enable MIDI In to KARMA Module

Start/Stop(Realtime) Out: ☐ Enable Start/Stop Out in Prog/Combi

SEQ MIDI Out Setup

Song Track: > for Master

Param Edit: > Control Change

Drum Track MIDI Setup

Prog MIDI Ch: > 10

☐ Prog MIDI Out

MIDI External1 External2

Basic MIDI Controllers / Scales Category Wave Seq Drum Kit Options Info

By default the **Convert Position** is set to "Pre Midi". In order for the EXs-185 Accordion Master sound library to work properly, it is necessary to set the **Convert Position** to "Post Midi".

Be sure to **Write Global Setting** when modifying the data as follows:

1. Select **Write Global Setting** from the drop-menu, a dialog box will appear.
2. Press **OK** to write the data, or press cancel without writing the data.

You can also use the **SEQUENCER REC/WRITE** switch to write data in the same way as the **Write Global Setting** command.

Voice Name List

Programs-UFF **[ROOM REVERB]**

U-FF000	Accordion Master
U-FF001	Accordion Accordion
U-FF002	Accordion Musette
U-FF003	Accordion Bandoneon
U-FF004	Accordion Organ
U-FF005	Accordion Basson
U-FF006	Accordion Harmonium
U-FF007	Accordion Cassotto
U-FF008	Accordion Bandoneon 2
U-FF009	Accordion 1
U-FF010	Accordion 2
U-FF011	Accordion 3
U-FF012	Accordion 4
U-FF013	Accordion 5
U-FF014	Accordion 6
U-FF015	Accordion 7
U-FF016	Arb Accordion 8
U-FF017	Accordion Piccolo

Combi-UC **[LIVE REVERB]**

U-C000	Accordion Master
U-C001	Accordion Accordion
U-C002	Accordion Musette
U-C003	Accordion Bandoneon
U-C004	Accordion Organ
U-C005	Accordion Basson
U-C006	Accordion Harmonium
U-C007	Accordion Cassotto
U-C008	Acordion Bandoneon 2
U-C009	Accordion M + Accordion
U-C010	Accordion M + Musette
U-C011	Accordion M + Bandoneon
U-C012	Accordion M + Acc.Organ
U-C013	Accordion M + Basson
U-C014	Accordion M + Harmonium
U-C015	Accordion M + Cassotto
U-C016	Accordion M + Bandoneon2
U-C017	Accordion A + Accordion
U-C018	Accordion A + Musette
U-C019	Accordion A + Bandoneon
U-C020	Accordion A + Organ
U-C021	Accordion A + Basson
U-C022	Accordion A + Harmonium
U-C023	Accordion A + Cassotto
U-C024	Accordion A + Bandoneon2

Kelfar Technologies EXs-185 Accordion Master

U-C025	Accordion A + Arb Accord
U-C026	Musette + Bandoneon
U-C027	Musette + Organ
U-C028	Musette + Cassotto
U-C029	Musette + Arb Accordion8
U-C030	Bandoneon + Organ
U-C031	Bandoneon + Basson
U-C032	Bandoneon + Bandoneon
U-C033	Bandoneon + Harmonium
U-C034	Bandoneon + Cassotto
U-C035	Organ + Basson
U-C036	Organ + Harmonium
U-C037	Organ + Cassotto
U-C038	Organ + Bandoneon2
U-C039	Accordion B + Piccolo
U-C040	Accordion M + Accordion1
U-C041	Accordion M + Accordion2
U-C042	Accordion M + Accordion3
U-C043	Accordion M + Accordion4
U-C044	Accordion M + Accordion5
U-C045	Accordion M + Accordion7
U-C046	Accordion M + Arb Accord
U-C047	Accordion A + Accordion2
U-C048	Accordion A + Accordion3
U-C049	Accordion A + Accordion4
U-C050	Accordion A + Accordion5
U-C051	Accordion A + Accordion6
U-C052	Accordion A + Accordion7
U-C053	Accordion A + Arb Accord
U-C054	Accordion B + Accordion4
U-C055	Accordion B + Accordion5
U-C056	Accordion B + Accordion6
U-C057	Accordion B + Accordion7
U-C058	Harmonium + Bandoneon
U-C059	Accordion C + Accordion4
U-C060	Accordion C + Accordion5
U-C061	Accordion B + Accordion5
U-C062	Accordion B + Accordion7
U-C063	Accordion 5 + Accordion4

***AMS (ALTERNATE MODULATION SOURCE)**

SW1: Octave Down

SW2: Octave Up

MusltiSamples

MS0 AccMaster
MS1 AccAccordion
MS2 AccMusette
MS3 AccBandoneon
MS4 AccOrgan
MS5 AccBasson
MS6 AccPiccolo
MS7 AccHarmonium